

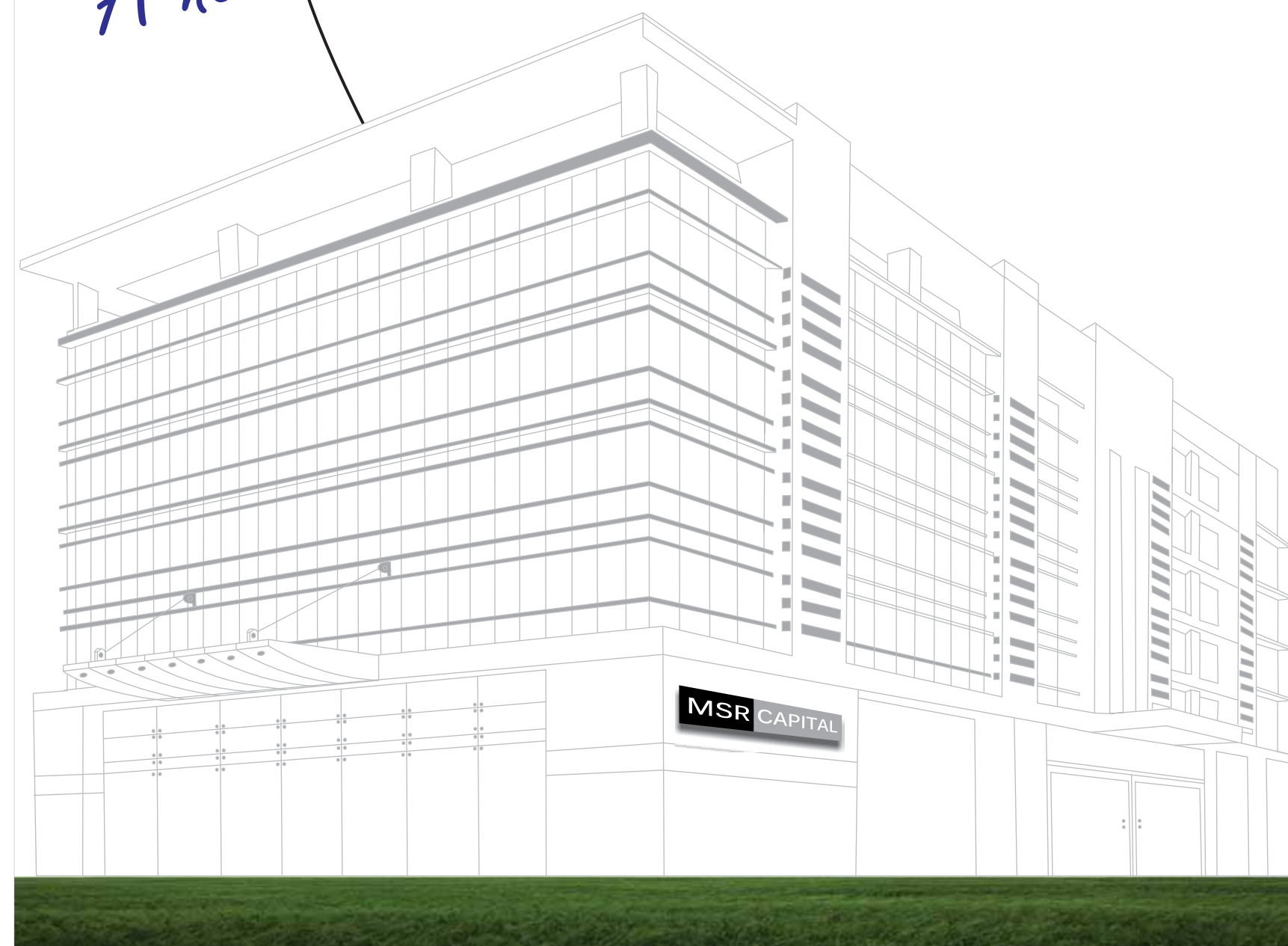
Corporate Office : Amar Avinash Corporate City, 4th Floor, Above HSBC Bank, Bund Garden Road, Pune - 411001
Phone : +91 20 4006 5000 Fax: + 91 20 4006 5040 Email : msrcapital@mindspacerealty.com www.mindspacerealty.com

Disclaimer : This brochure is purely conceptual and not a legal offering. all the specifications, designs, facilities, dimension etc. are subject to approval of the respective authorities.
and the developers reserve right to change the specifications or features without any notice or any obligation.

MSR CAPITAL
PIMPRI - PUNE



A new corporate landmark in PCMC





Pimpri's business hub gets a **New landmark.**

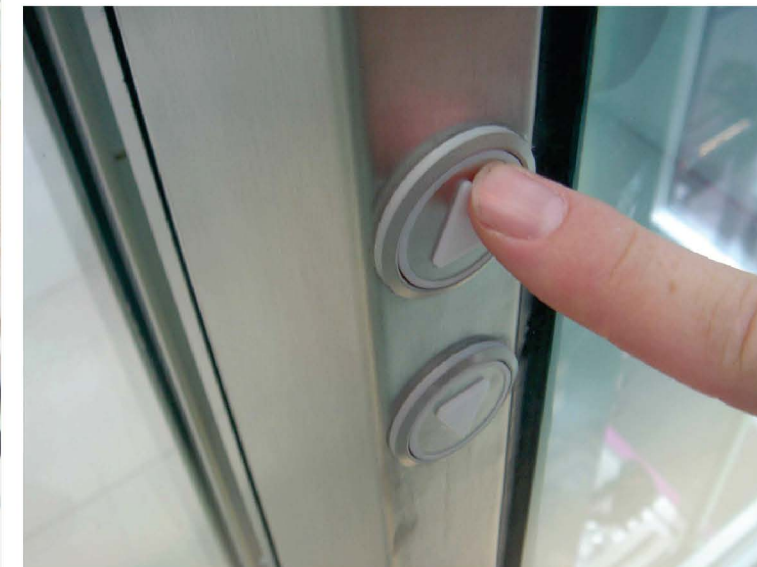
As Pimpri's new corporate landmark, MSR Capital commands an enviable position in highly strategic location. MSR Capital is the First Exclusive office building centrally located in growing PCMC.

In terms of convenience, ease and connectivity of business destinations. Accessibility will be a boon to your office, Prospective clients, business associates and employees will find your office easy to reach from any part of Pune and as well as Mumbai.

Arrays of five star business hotels like Citrus are perfect for an important business lunch or dinner. And with Multiplexes, McDonald's, Domino's Pizza and Pizza hut virtually down the road, after office socializing can happen as often as you like.

With multinationals and the most successful companies already in Kamla Crossroads at PCMC, now we take you one step ahead with MSR Capital, an ideal destinations for your business to grow !

THE CORPORATE CULTURE.




FEATURES:

- Central Location, a boon in accessibility
- Intelligent Building
- Grand Entrance Lobby
- Two Level Parking
- Three High Speed Elevators.
- Wide column spacing for flexibility in interior designing
- Premium showroom floor – 40,000 sq ft
- Offices start from 1200 sq ft. Onwards
- Combination of Offices Floor Plate 23,000 sq ft
- Clear broad span Height of 11' at Every Floor
- Eco Friendly with maximum use of natural light
- 24" x 24" Verified Flooring
- 100% Gen-set Power backup
- Twenty Four hours security and CCTV Common Area
- Provision for Air Conditioning
- Attached Toilet in each office
- wi fi / Broadband / Telephone Connectivity



PERFECT WORK ENVIRONS.



Unparallel thinking
behind **MSR Capital**,

MSR Capital simply radiates the style and luxury from its smallest detail it makes a strong architectural statement that will no doubt leave your clients and visitors impressed.

Clear vistas and natural light make each office a privilege to work in.

The grand Italian marble finish lobby which is sure to make your clients gasp with its magnificence, with Three high speed elevators help avoiding clutter and make all the floors easily accessible office. 100% power backup ensures the uninterrupted work environment and best technology and manpower ensures 24 x7 securities.

In a city where parking is the bane of all goers, it's a welcome relief that MSR Capital has two levels of parking, giving it the unique distinction of having the highest parking spaces to office ratio.

You will agree that more than an office space, MSR Capital gives you possibly the finest work environment, at the most desirable address in Pimpri.

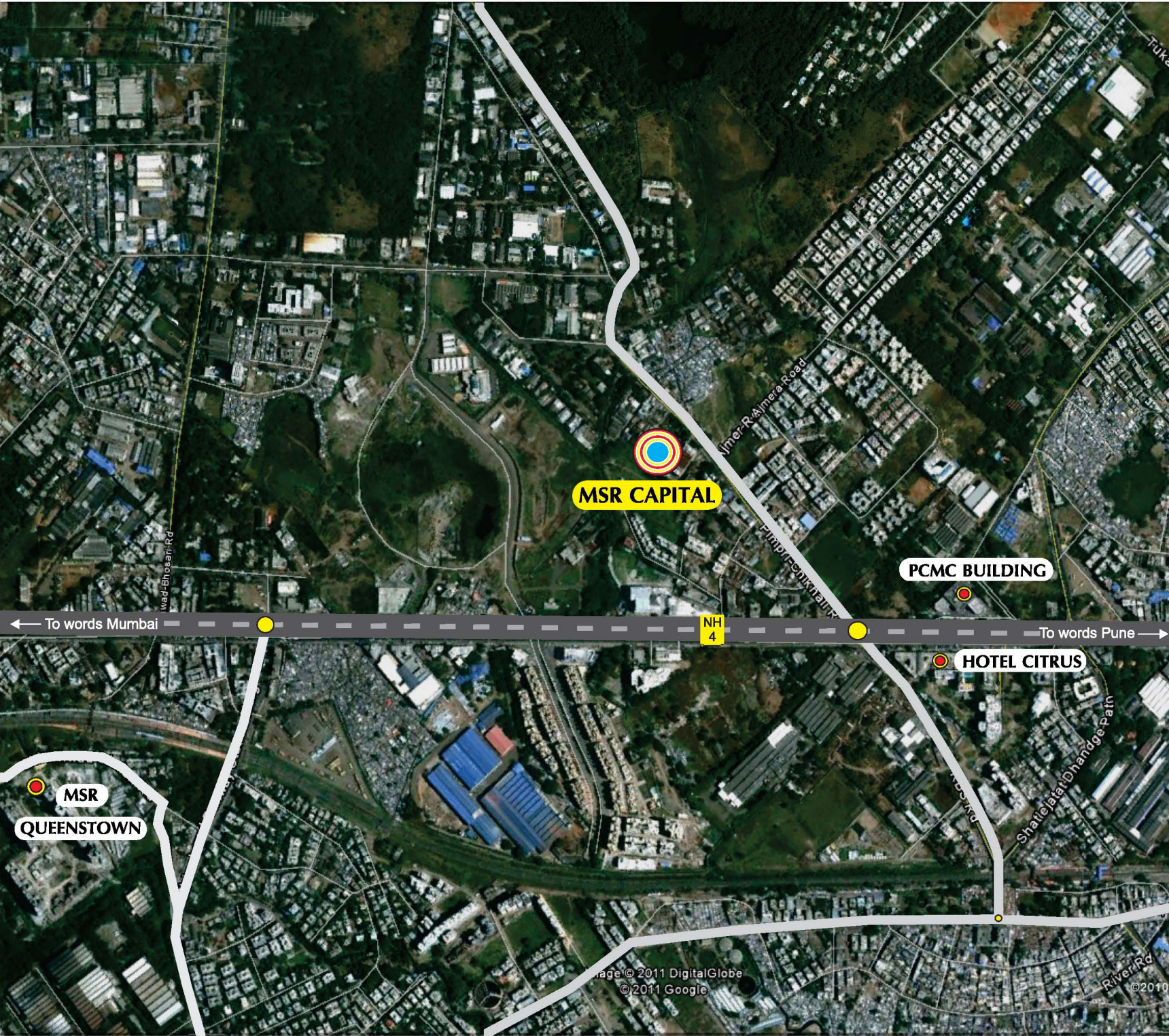
Location par excellence

KEY DISTANCES

Bhosari	08 kms.	Hinjewadi	08 kms.
Shivaji Nagar	13 kms.	Chinchwad	01 kms.
Airport	19 kms.	Chakan	19 kms.
Pimpri Station	01 kms.	Talegaon	15 kms.

Next to PCMC city center project.

With its strategic location, **MSR CAPITAL** is close to all your business needs like banking facilities, five star hotels like Citrus & Ginger, all major shopping malls, restaurants, multiplexes and .even public facilities like the railway station and the Pimpri Chinchwad Municipal Corporation. Brands like ICIC, HDFC, Max New York, Birla Sunlife, Tata Motors, Finolex Cable, Pizza Hut, Mc Donalds, Big Bazaar, Multiplexes etc. are all within a striking distance of less than 1 kms from MSR Capital.



Presenting pimpri's most exclusive office Development.
Exquisite location, customized design,
For companies on the rise.

Look beyond the iconic, all glass facade of MSR Capital. Along with unsurpassed vicinity, it's the thinking and design that forms the heart of this breakthrough development, you'll realize why, among all of Pimpri's contemporary office complexes MSR Capital stands alone...

Designed specifically for mid – sized corporate Multi National companies and professionals, MSR Capital offers boutique offices. Its unique design gives you the flexibility to expand your office space as your business grows.

Furthermore, your office is supported by world – class amenities, business facilities, and luxury and styling, all of which send the right signals to potential clients, associates and employees.

Unmatched in thought, convenience and luxury, MSR Capital is the most advanced office development in the heart of Pimpri.

Site Add.: MSR Capital, Near PCMC Building , Morwadi, Pimpri Pune - 411 018
This property is mortgage to ICICI BANK LTD. NOC for individual sales will be provided on demand.

PREMIUM BOUTIQUE OFFICE SPACES.

Our Projects

- Kamla Cross Road
- Kamla Arcade
- Kamla Corner
- Hermes Heritage
- Citrus Hotel
- Hermes Waves
- Olive Hotel

Ongoing Projects

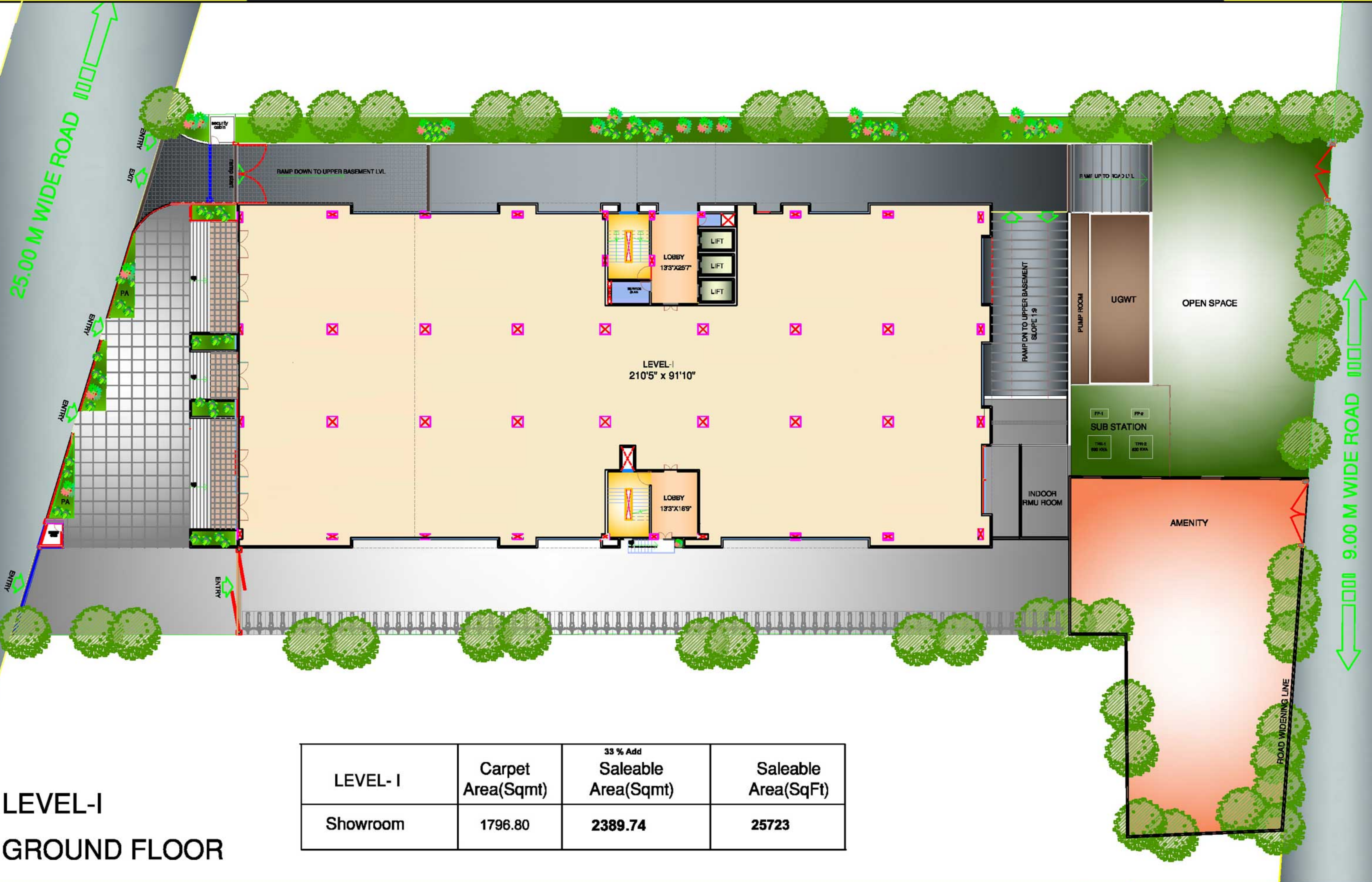
- Msr Queenstown (Chinchwad)
- Msr Olive (Ambegaon)
- Queenscourt (Belguam)
- Jalsa (Prabhat Road)

Upcoming Projects

- Empress Court (Belguam)
- Msr Platinum (Solapur)
- Spartan Commercial (Pune)
- B2B Residencial (Wanawadi)
- Plotted Layout (Malwali - Lonawala)
- Kadambe Plato (Goa)
- Msr Plots (Solapur)



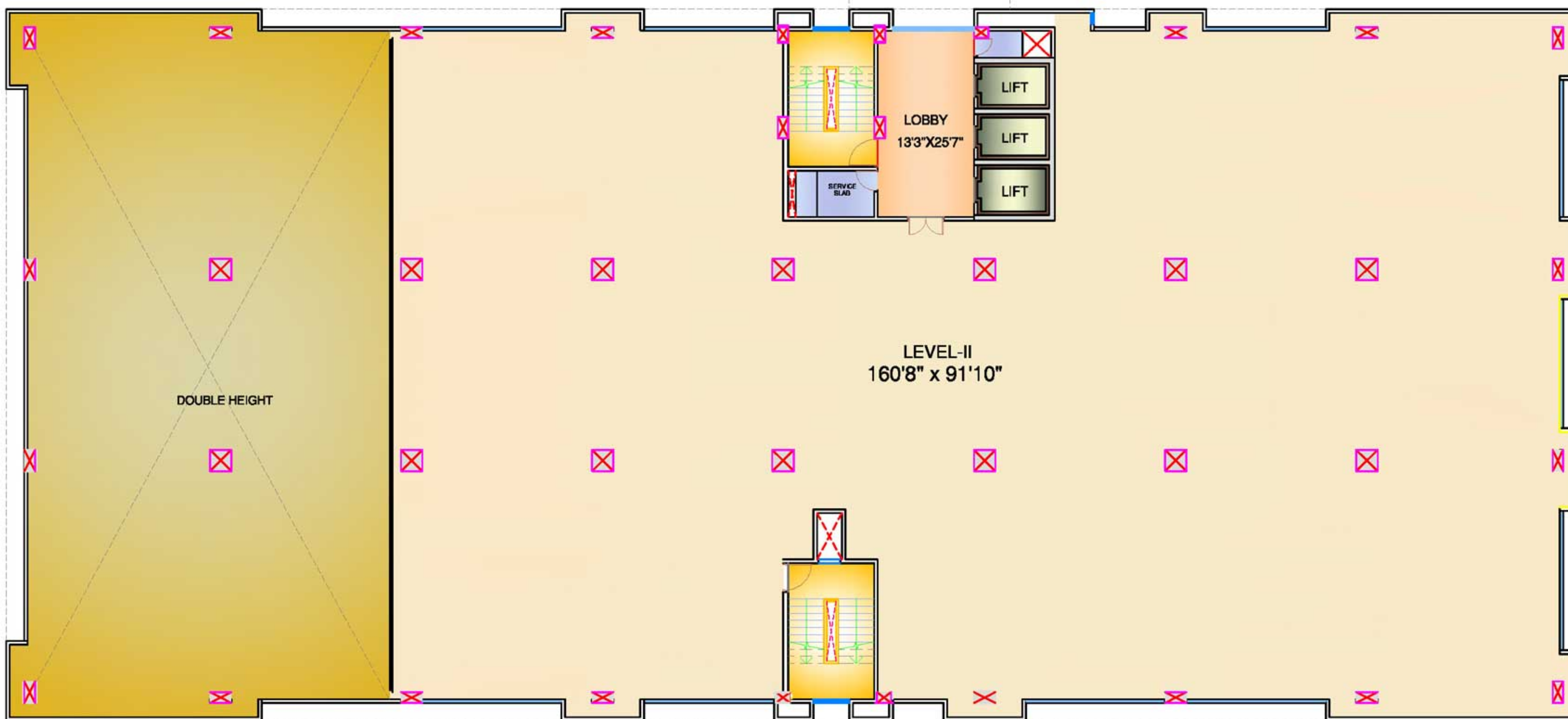
Floor Plans



LEVEL- I	Carpet Area(Sqmt)	33 % Add Saleable Area(Sqmt)	Saleable Area(SqFt)
Showroom	1796.80	2389.74	25723

LEVEL-I
GROUND FLOOR

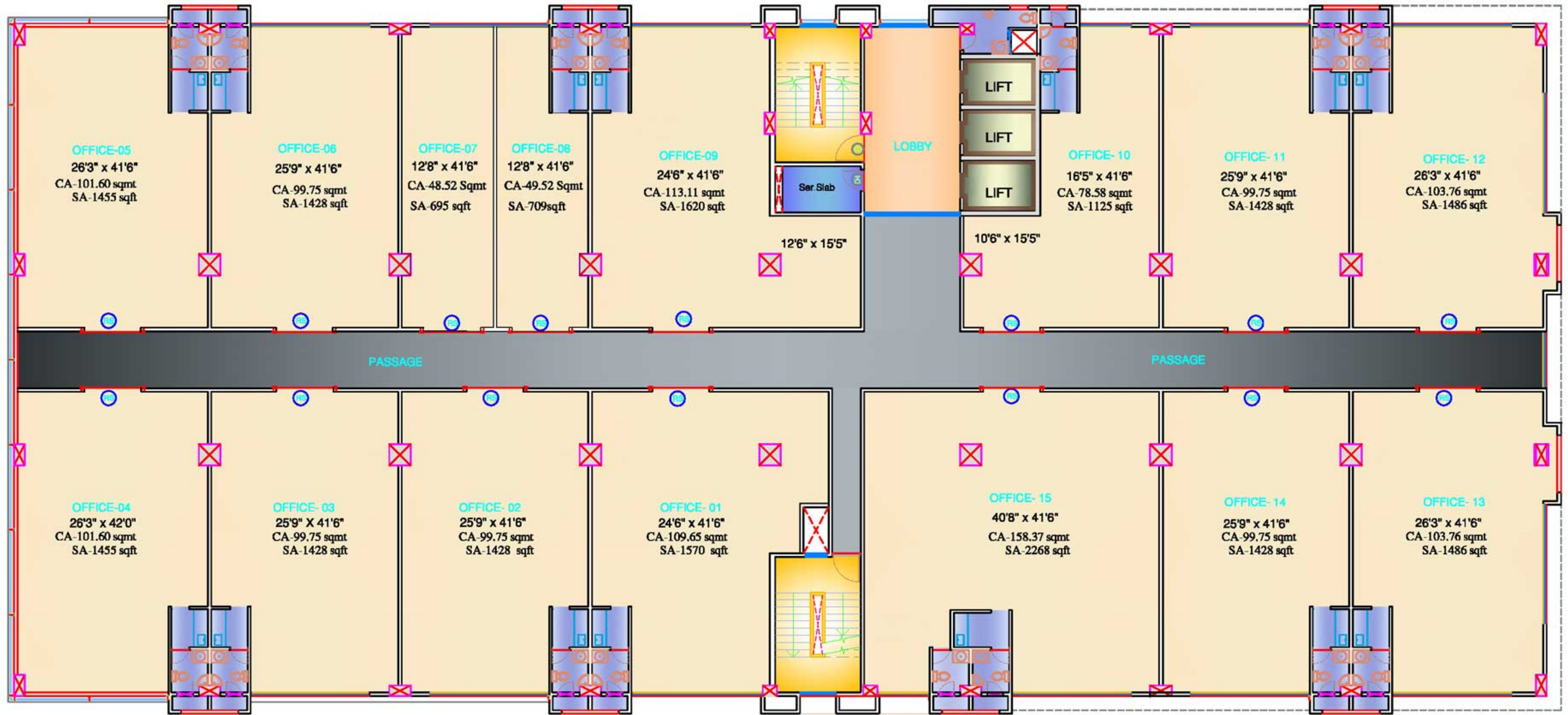




LEVEL-II
FIRST FLOOR

LEVEL- II	Carpet Area(Sqmt)	33 % Add Saleable Area(Sqmt)	Saleable Area(SqFt)
Showroom	1345.81	1789.92	19267



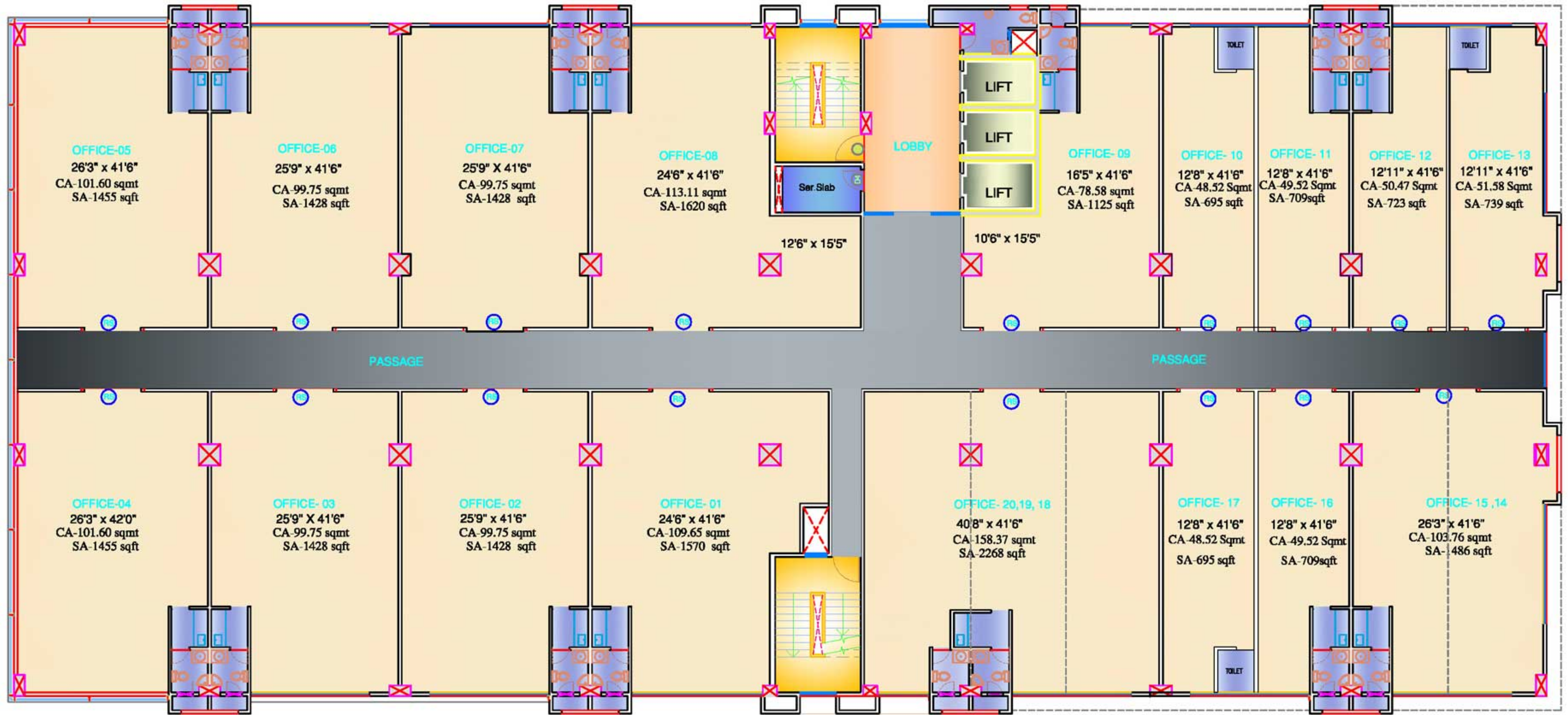


(2nd floor)

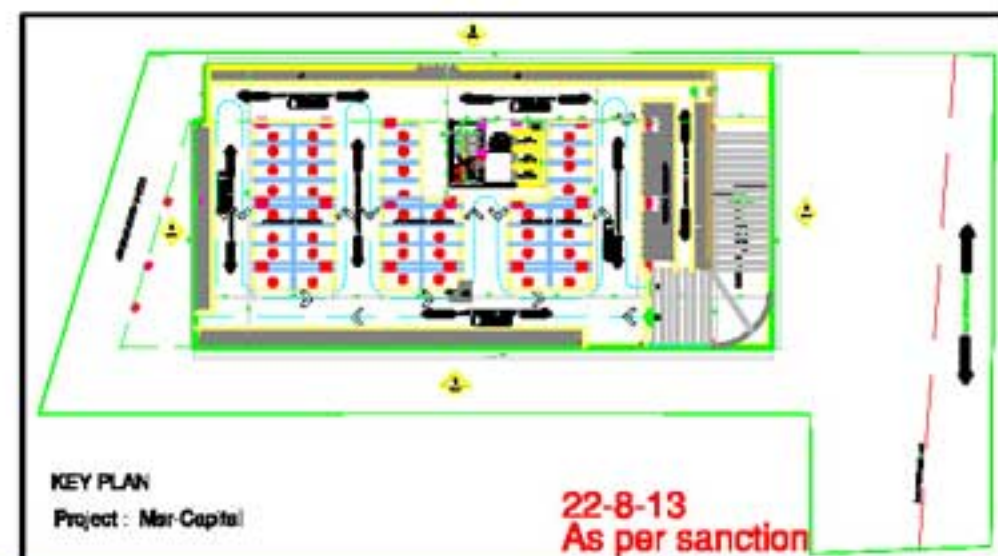


PROPOSED MSR-CAPITAL COMMERCIAL PROJECT AT PIMPRI

MINDSPACE REALTY PVT.LTD.
Amar Avinash corporate plaza, 7th floor, near
Inox Multiplex, Bund garden, Pune
Pune-411001
Tel:020/40065000
Fax:020/40065040

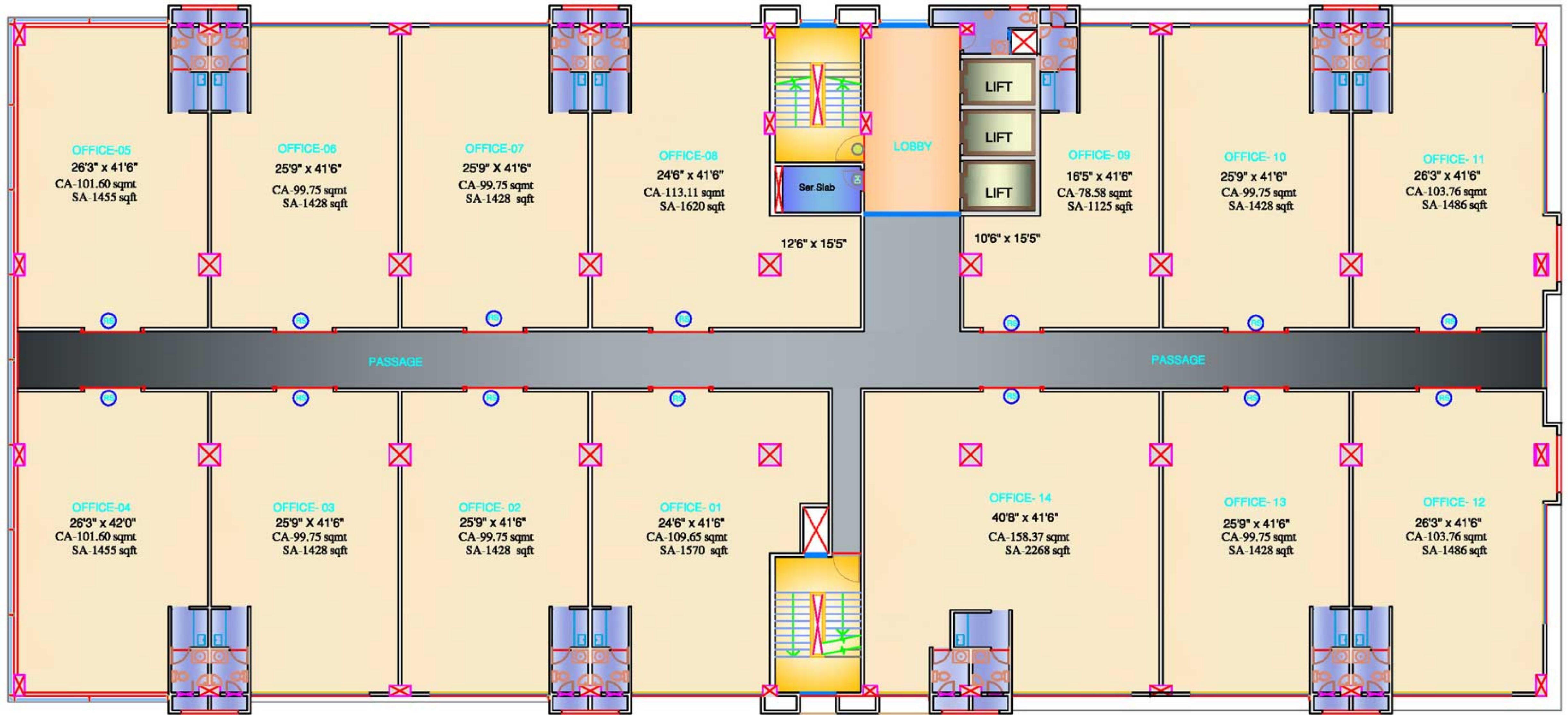


(3rd floor)



PROPOSED MSR-CAPITAL COMMERCIAL PROJECT AT PIMPRI

MINDSPACE REALTY PVT.LTD.
Amar Avinash corporate plaza, 7th floor, near
Inox Multiplex, Bund garden ,Pune
Pune-411001
Tel:020/40065000
Fax:020/40065040

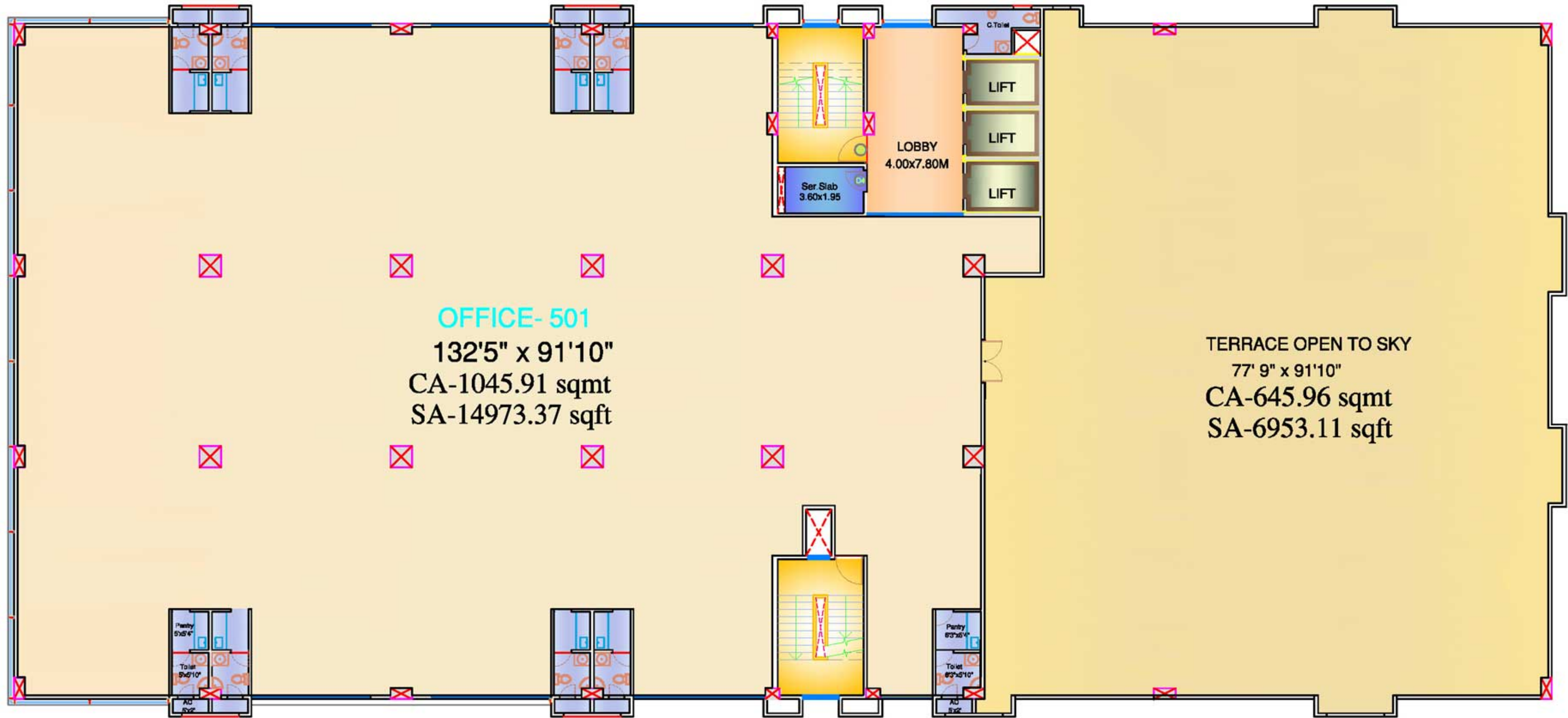


(4th floor)



PROPOSED MSR-CAPITAL COMMERCIAL PROJECT AT PIMPRI

MINDSPACE REALTY PVT.LTD.
Amar Avinash corporate plaza, 7th floor, near
Inox Multiplex, Bund garden, Pune
Pune-411001
Tel:020/40065000
Fax:020/40065040



5th FLOOR

PROPOSED MSR-CAPITAL COMMERCIAL PROJECT AT PIMPRI



1-4-13

MINDSPACE REALTY PVT.LTD.
 Amar Avinash corporate plaza, 7th floor, near
 Inox Multiplex, Bund garden, Pune
 Pune-411001
 Tel: 020/40065000
 Fax: 020/40065040